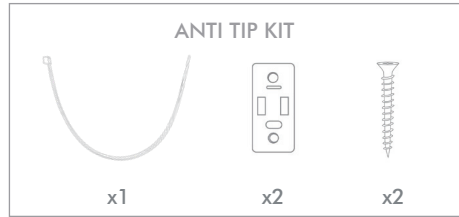
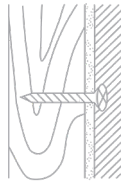


OLIVER BONAS

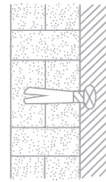
MOTHER OF PEARL CHEST OF DRAWERS



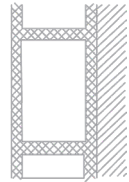
Please use the anti tip kit provided for safety. Please ensure the correct fittings are used for the chosen wall substrate:



WOOD

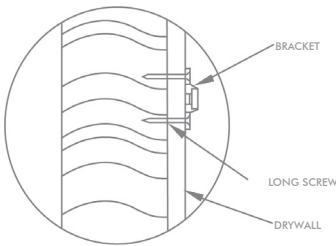


BRICK

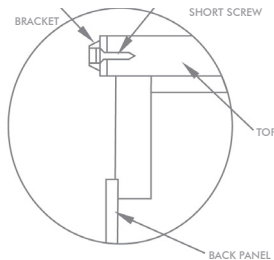


CAVITY
(Special fittings needed)

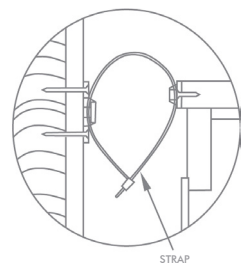
ASSEMBLY



1. Mark the location of the hole on the wall using bracket approx 1" below the top of furniture. Predrill the holes at marked location & insert wall plug. Align bracket onto wall plug & secure using long screws.



2. Move the furniture to its final position against the wall and mark the location of the wall bracket on the back of the furniture. The bracket that attaches to the furniture must go into the solid wood piece at the top, not into the thinner back panel. Move the furniture away from the wall and place a bracket on the mark. Mark and drill holes for the screws using a 3/32 drill bit. Attach the bracket to the furniture using the short screws.



3. Move the furniture to its final position and align the bracket on the furniture with the bracket on the wall. Thread the strap through the bracket as shown, and tighten until snug. Do not over-tighten.

IMPORTANT

Check that the wall bracket is firmly screwed into the stud, the furniture bracket is firmly attached to the frame, and the strap is snug.

OLIVER BONAS

MOTHER OF PEARL CHEST OF DRAWERS

We hope you love your purchase, however if you aren't completely happy please retain your packaging to ensure its safe return

Each piece has been individually handcrafted by artisans in
Jodhpur to create a unique piece of furniture
Variations may occur

MOTHER OF PEARL

The Mother of Pearl is a by-product of the food industry and is imported from
China to India, then cut individually to shape by artisans in Jodhpur

MERANTI WOOD

Meranti wood is a hardwood timber harvested from South Asia
Meranti wood is coarse in texture

MDF

This has been used for the backing panel and drawer bases

CARING FOR YOUR FURNITURE

To help maintain the natural beauty and performance of your piece of furniture do not position
in front of radiators, avoid direct heat, direct sunlight, moist environments and outdoor use

Any spills should be removed immediately, never let them dry out on the surface
Always use a coaster or mat to protect the surface

Take care when moving the furniture
Do not drag furniture as it may cause damage to the joints

Max load on top of unit 40kg Max load small drawer 3kg Max load large drawers 10kg

Take care not to overload and ensure weight is evenly distributed
Wipe with a damp cloth followed by a soft dry cloth
Do not use abrasive cleaners or furniture polish on the Mother
of Pearl as this may cause discolouration
Avoid sudden impacts, as this may damage the Mother of Pearl

Not suitable for outdoor use or for children's rooms

Do not sit or stand on the furniture
Designed for domestic use only
Please retain this information for future reference